

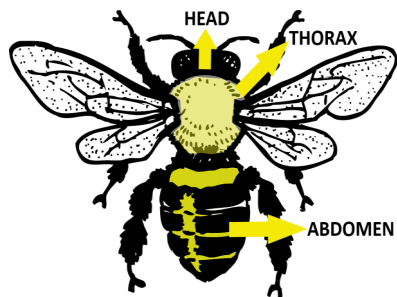
# INVESTIGATING INSECTS



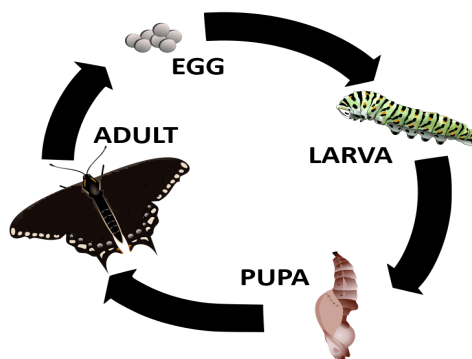
INSECTS ARE INCREDIBLE! THEY CAN BE FOUND IN ALMOST EVERY ENVIRONMENT ON THE PLANET AND MAKE UP AT LEAST 80% OF ALL SPECIES! ABOUT A MILLION KINDS ARE KNOWN IN ALL SHAPES, COLORS AND SIZES! ALSO, MOST FOOD WOULDN'T EVEN BE POSSIBLE WITHOUT INSECTS POLLINATING OUR CROPS!

## DID YOU KNOW?

DID YOU KNOW THAT AN INSECT IS AN ANIMAL WITH 6 LEGS AND 3 BODY PARTS? LET'S NAME THE THREE BODY PARTS OF THIS HONEYBEE!



## FUN FACT:



ALL INSECTS HAVE LIFE STAGES! WATCH HOW THIS INSECT GOES FROM AN EGG TO A LARVA (CATERPILLAR) TO A PUPA TO AN ADULT BUTTERFLY!



## CAUTION

"SOME INSECTS BITE AND STING!"

KNOW YOUR INSECTS BEFORE HANDLING THEM!  
THE INSECTS IN OUR ACTIVITY ARE MORE SAFE BUT DO YOUR RESEARCH BEFORE EVER PICKING UP AN INSECT!



Let's find some insects!

# SCAVENGER HUNT

**DIRECTIONS:** LET'S GO ON A SCAVENGER HUNT IN YOUR BACKYARD AND FIND SOME INSECTS! TRY TO LOCATE THE INSECTS LISTED BELOW AND DRAW WHAT YOU'VE SEEN IN THE BOXES! IN ADDITION TO THEIR SHAPES AND COLORS BE SURE TO INCLUDE AND LABEL THE INSECTS' BODY PARTS YOU JUST LEARNED ABOUT AS WELL AS ANY OTHER BODY PARTS YOU SEE LIKE ANTENNAS OR WINGS! DESCRIBE YOUR FINDINGS AND BE SPECIFIC! ENJOY THE HUNT!



LADYBUG

HOUSEFLY

BUTTERFLY

LOCUST

CRICKET

GRASSHOPPER



**REGIONAL HIGHLIGHT:** DO YOU KNOW THAT MOST STATES HAVE THEIR OWN STATE INSECT OR STATE BUTTERFLY? OKLAHOMA HAS BOTH! OUR STATE INSECT IS THE HONEYBEE AND OUR STATE BUTTERFLY IS THE BLACK SWALLOWTAIL! CAN YOU SPOT EACH OF THEM IN THIS ACTIVITY?